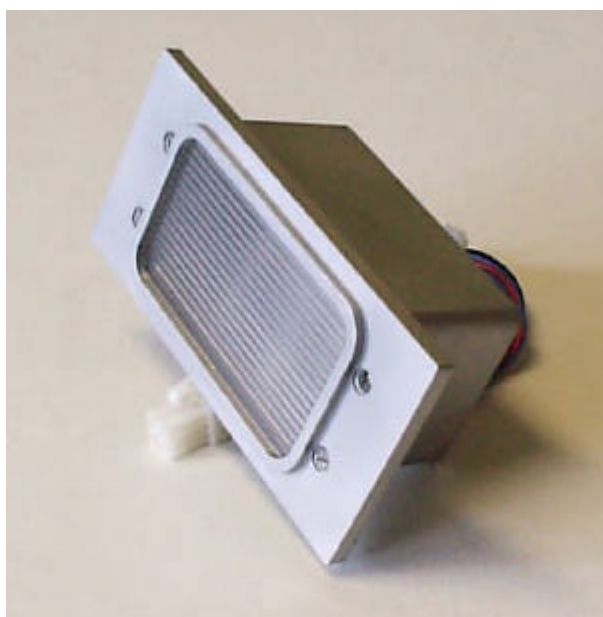


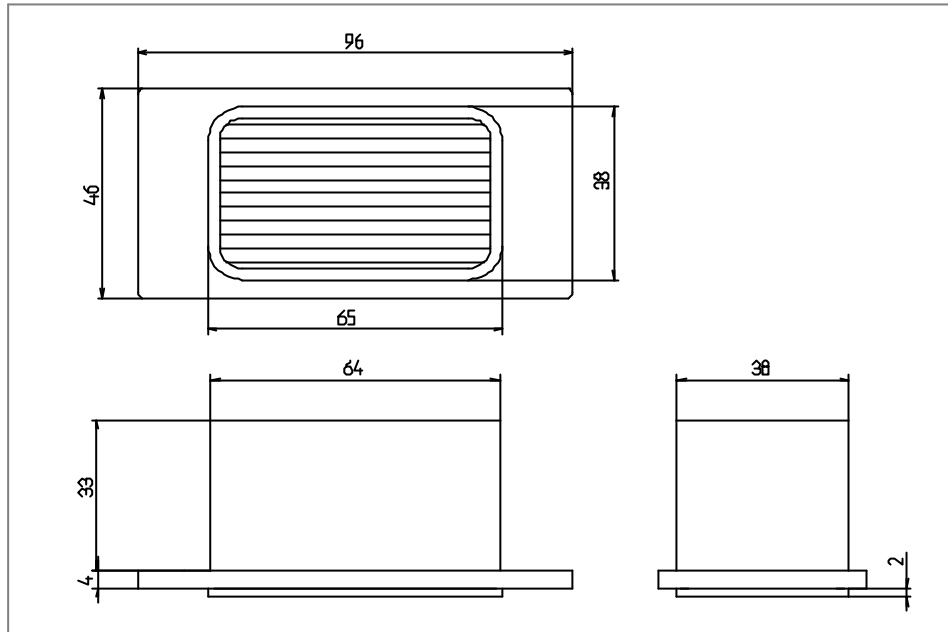
Mainly dedicated for VIP application, this LED emergency ceiling light is fully compliant with the FAR / JAR 25.812.

Installed in the ceiling - either at the level of each entrance either at the level of the aisle - it provides a direct illumination of the floor during an emergency evacuation of the passengers cabin.

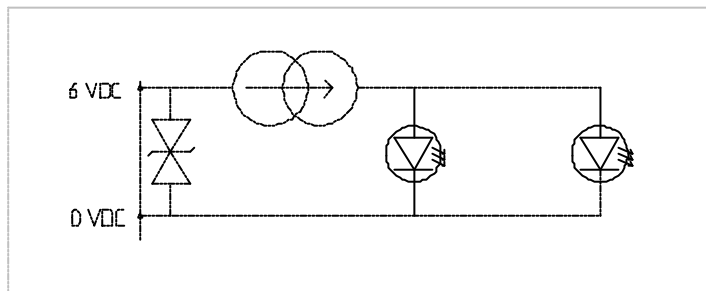
**TECHNICAL DATA**

Dimension:	See drawing
Mass:	0.130 kg
Power Supply:	See table
Electrical Interface:	Two wires. Length 1 m.
Mechanical Interface:	By clips
Light Source:	Two LXHL-MW 1C LUXEON.
Useful Life:	> 20 000 Operating Hours
Environmental Spec:	Tested & qualified according to RTCA DO160D

Dimension



Schematic Diagram



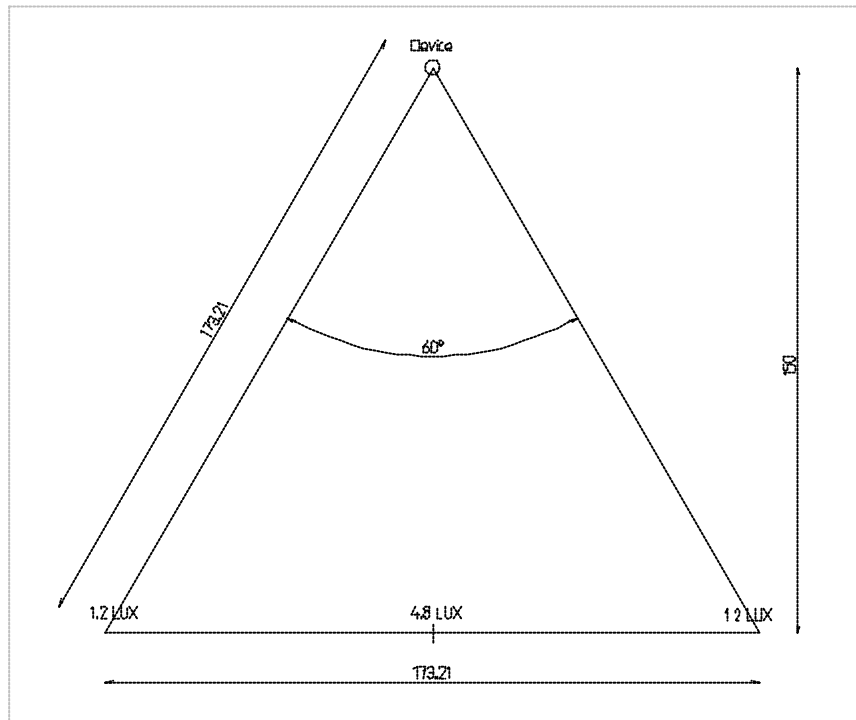
Part description numbering system

540	101	Y	Z
			↓ Finish code
	↓	↓	Power Supply code
	Model		
Y	Power Supply		
A	6 VDC – 500 mA		
Z	Casing Finish & Color		
0	Brushing G180 + OAS uncolored		
1	Brushing G180 + OAS black		
2	Brushing G400 + OAS uncolored		
3	Brushing G400 + OAS black		
4	Nickel Brushed n° 19 (Product)		

Lighting Characteristics

Light characteristics at followings measurement conditions :

- Power Supply : 6 VDC.
- Consumption : 0.500 mA



FAR/JAR 25-812 requirements (armrest level) :

- Average : 0.6 Lux.
- Minimum : 0.1 Lux.