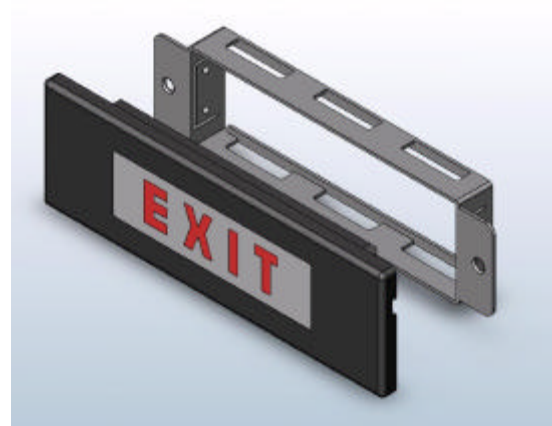
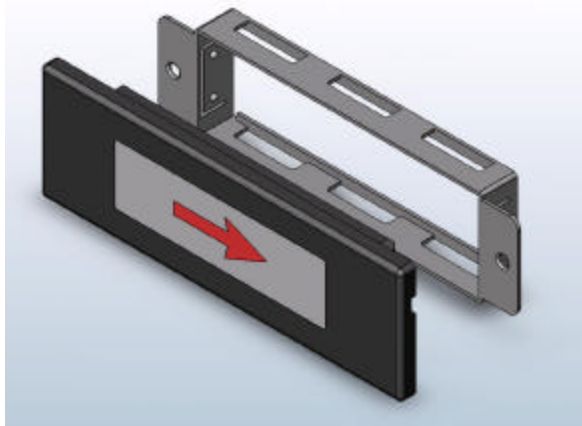


In a cabin passengers, the Floor Proximity Emergency Escape Marking is intended to guide the passengers through the cabin to the exit doors in the dark of the night. Such system are defined per FAR / JAR 25.812 (e) requirements (FPEEPM).

LEDS units proposed by Madelec allow to easily built a such system adapted to the aircraft lay-out. They are available with various legend (arrows, exit, etc.), in various finish, color and power supply.

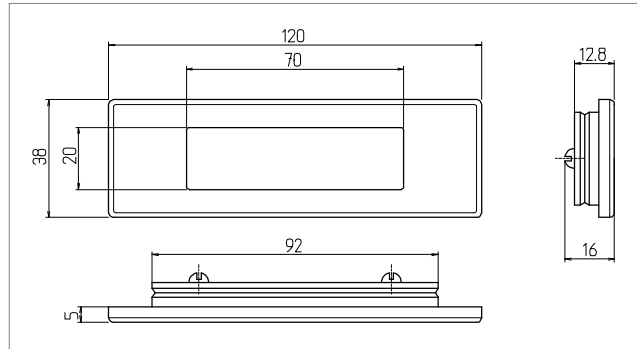


To make easier the installation and maintenance on aircraft, this unit is coggled in an dedicated mounting holder attached to the aircraft structure by two standard screws.

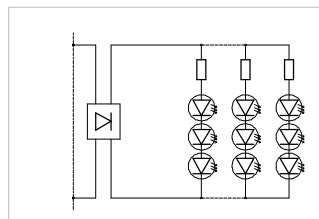
TECHNICAL DATA

Dimension:	120 x 38 x 12.8 mm
Mass:	0.075 kg
Power Supply:	See table
Electrical Interface:	Two TCB n°6-32 screws
Light Source:	White LED array.
Useful Life:	> 20 000 Operating Hours
Environmental Spec:	Tested & qualified according to RTCA DO160D

Dimension



Wiring Diagram



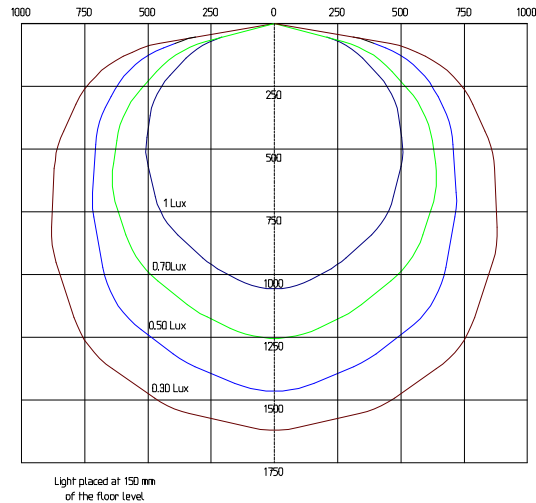
Part description numbering system

533/730-	XXX	Y	Z
	↓	↓	↓
			Finish code
			Power Supply code
			Legend Type code
533-			Lighting units
XXX			Lens Legend
010			Lighting unit
011			Lighting unit with red arrows
730-			Exit marker
XXX			Lens Legend
110			Vertical Exit
111			Horizontal Exit
Y			Power Supply
A			6 VDC – 75 mA
D			115 VAC 400 Hz – 19 mA
Z			Casing Finish & Color
0			Brushing G180 + OAS uncolored
1			Brushing G180 + OAS black
2			Brushing G400 + OAS uncolored
3			Brushing G400 + OAS black
4			Nickel Brushed n° 19 (Product)

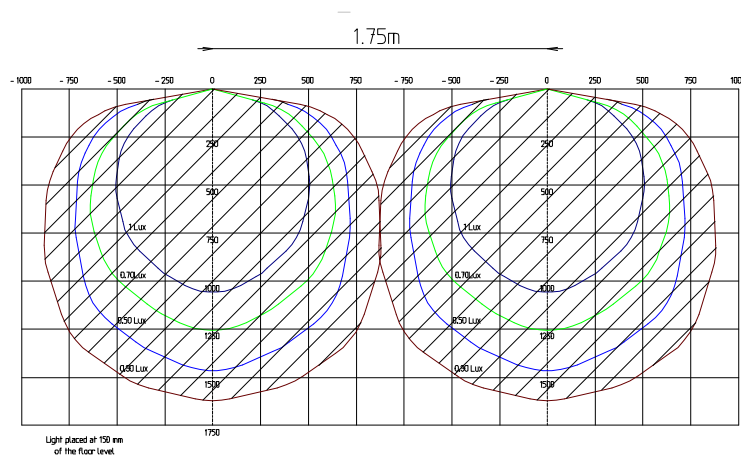
Lighting Characteristics (P/N 533-010YZ)

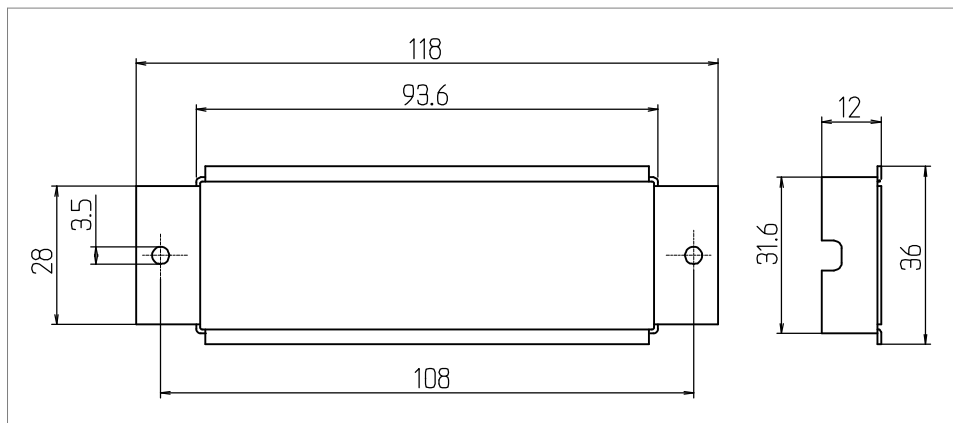
Light distribution at followings measurement conditions :

- Power Supply : 6 VDC.
- Consumption : 0.075 mA
- Device installed vertically at 150 mm of the floor level.
- In the dark



Simulation of light distribution between two light units installed at 1.75 meters apart.



Mounting holder P/N 533-10051**Example of installation on honeycomb panel**