

The "Water Drop" model



Function

This Visual Ice Indicator consists of a little shape profiled in form of "water drop".

Flying in icing conditions, the shape accumulates ice, which is easily visible by both pilot and co-pilot.

The probe is internally lighted to allow the use in night flight conditions.

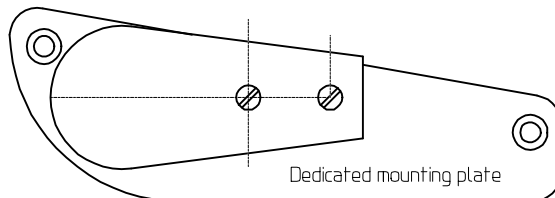
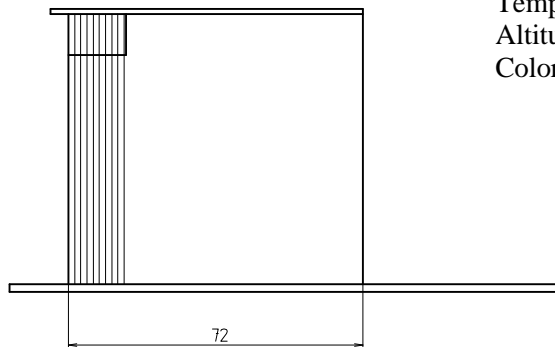
This device is generally installed on the base of the windshield, at the pilot seat level, in the crew's direct field of vision.

Application

This equipment is installed basic on the ATR aircraft series ATR42 and ATR72.

Main characteristics

| | |
|------------------|----------------------------|
| Weight : | 0.250 Kg / 0.572 lbs. |
| Power voltage : | 28 VDC 24 mA. |
| Lighted source : | bi-pin. |
| Temperature : | from - 55 °C to + 85 °C. |
| Altitude : | from - 1000 to + 25000 ft. |
| Color : | black. |



Dimensions

