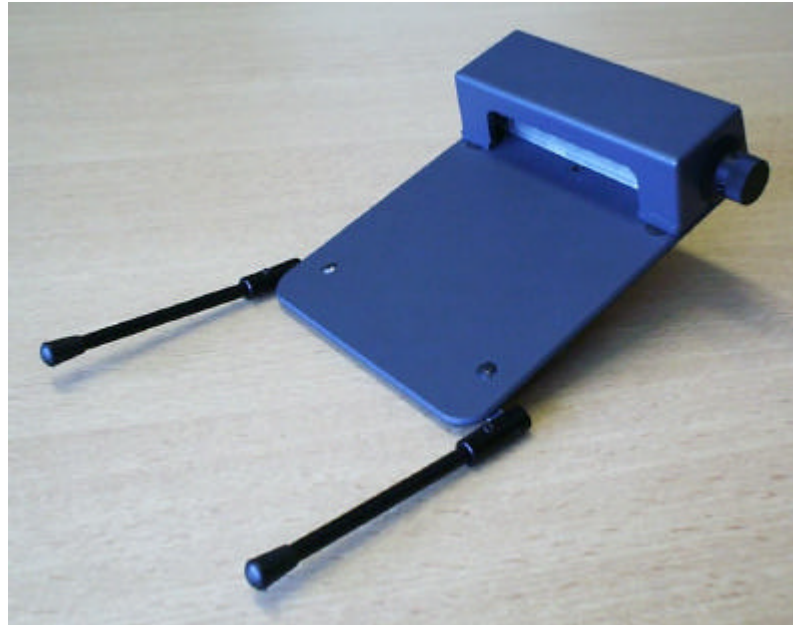


This chart-holder has been designed in close cooperation with cockpit experts and airline crew's for pilot's maximum comfort and ease of operation.



The chart-holder is lighted by white LEDs powered through a PWM circuit monitored by a potentiometer with OFF position.

The NVIS light is achieved by white LEDs filtered.

Installation on aircraft is achieved by a mounting interface designed on customers requirements and adapted to the application.

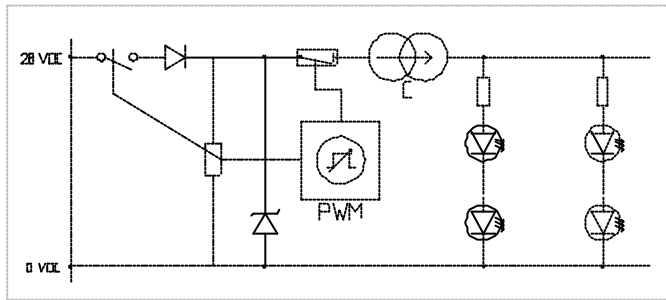
TECHNICAL DATA

Dimension:	98 x 133 x 42.5
Mass:	Less than 0.4 Kg.
Finish:	Mat gray 36076/FED-STD595. Logo on request.
Voltage:	28 VDC (Others voltages on request).
Current:	Less than 0.1 A at maximum brightness
Power Consumption:	2.8 W
Dimming:	OFF / 0 – 100 % monitored by potentiometer.
Electrical Interface:	Three wirings – normal/NVIS/ground (Connector on request).
Mechanical interface :	Designed on customer requirements
Light Source:	White LED array + filter.
Light characteristics	Normal: white LEDs 5500°K NVIS: NVIS Green A (compliant NVG Generation III type 1 or II class B)
Useful Life:	> 20 000 Operating Hours
Environmental Spec:	Tested & qualified according to RTCA DO160D

Part description numbering system

205-04M	XXX		
	↓		
	Application		
XXX		Application	
110	Basic model.		
210	Alenia C27J		

WIRING DIAGRAM



Model 205-04M110

