

TIMER P/N D102037 and D102037A

1. List of revisions

Initial	1	2	3				
20.12.95	07.08.97	26.09.97	04.05.98				

2. Description and Operation

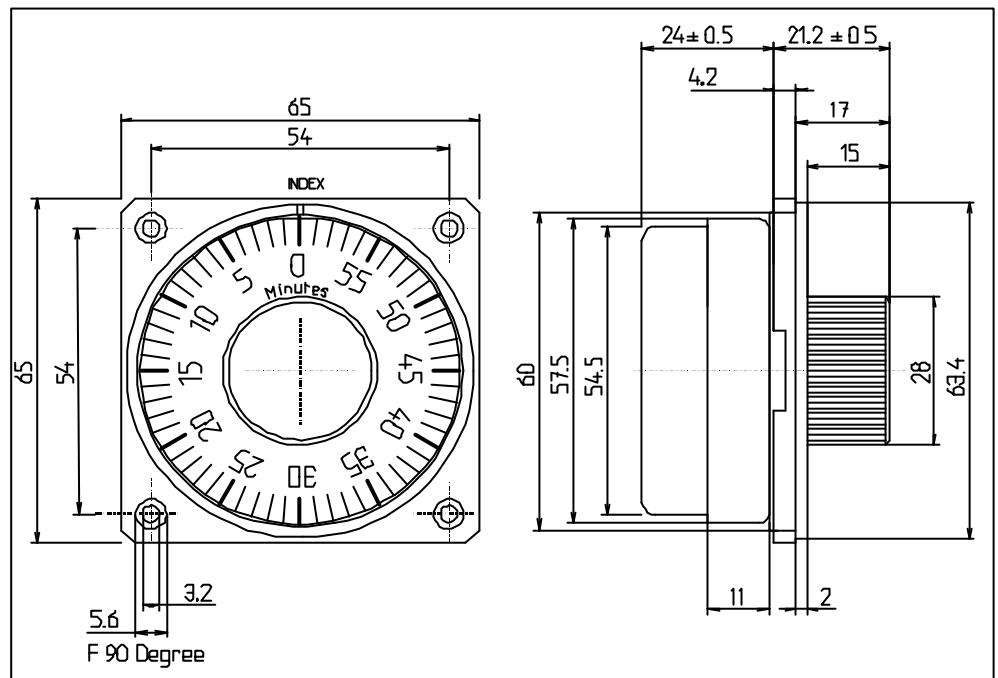
Before every time setting, the timer must be wound up by turning the knob fully clockwise.

The bell rings before the zero reaches the index mark (30s), for approx. 2 seconds.

All dimensions in millimeters.

Weight: 0.170 Kg / 0.375 lb

Accuracy: from 60 minutes to zero, maximum ± 108 seconds



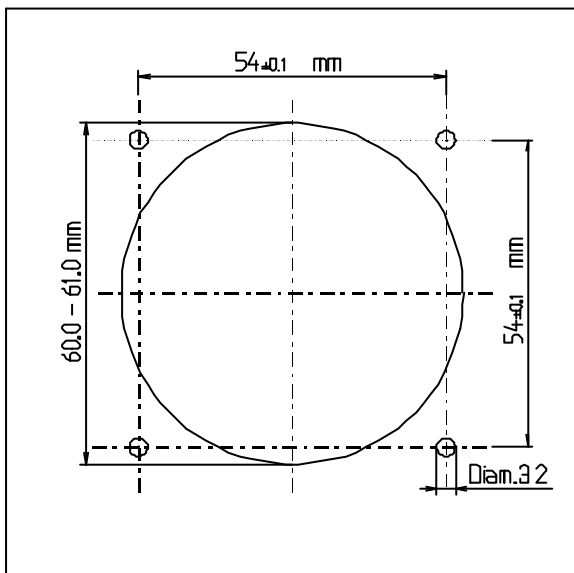
3. Adjustment & Test

1. Fully wind up the timer by turning the knob clockwise against the mechanical stop.
2. Check that the dial indicated between 60 and 1 minutes.
3. Turn the dial counterclockwise to 2 minutes.
4. Check that the bell rings for approx. 2 seconds.
5. After the bell stops ringing, fully wind up the timer against the mechanical stop.
6. Start a stop watch. (at full scale)
7. Stop the stop watch when the bell starts ringing. The running time should be comprised between 57' 24'' ? Rt ? 60' 56''.

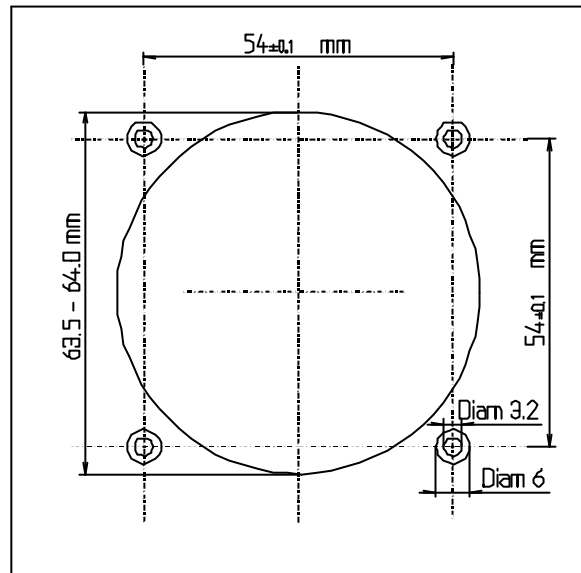
- note:**
- The timer must be fully winded up before every time setting.
 - The length of the bell signal is proportional to the amount of wind up.
 - When the time is reset before the bell fully stopped, the timer must be fully rewind.
(in this case the timer would not run until the dial is turned at least over 30 minutes)

4. Removal & installation

Timer installed from front side



Timer installed from backside



5. Maintenance

The clockwork assembly P/N D102037-1A (Fig. Item 1) can not be repaired. No repair manual and no spare parts are available. To change this item:

- Take down the cover (4).
- To take down the Dial and Knob (3), unscrewed the nut (5).
- Take down the plate (2), by unscrewing the screw (8).

To re assembly the timer, proceed at the reverse way.

6. IPC

-figure 1-

TIMER P/N D102037-A
 MOD. STATUS : 04
 MANUF. DATE : WWYY
 S/N : XXXX
 MADELEC AERO
 FSCM : F9503

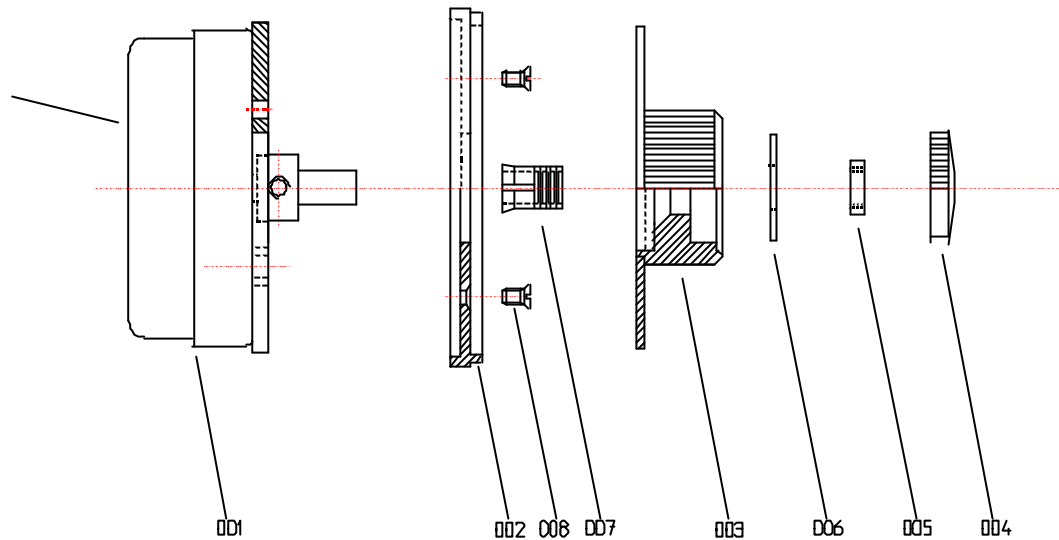


Fig. Item	P/N	Airline Stock N°	Designation	Usage	Unit/ Assy
-001A	D102037		Count down Timer, Grey Dial.		RF
-001B	D102037A		Count down Timer, Black Dial		RF
001	D102037-1A		.Clockwork assembly		1
002	D102037-2		.Grey Index Plate		1
003A	D102037-3		.Grey Dial & Knob	A	1
003B	D102037-3A		.Dark Dial & Knob	B	1
004A	D102037-4		.Grey Cover	A	1
004B	D102037-4A		.Dark Cover	B	1
005	D102037-5		..Nut		1
006	D102037-6		..Washer		1
007	D102037-7		..Collet		1
008	D102037-8		..Screw M2.5x4		4

- item not illustrated.