

MADELEC AERO

LIGHTED ICING INDICATOR

PART N°: MS741-000

**COMPONENT MAINTENANCE MANUAL
WITH
ILLUSTRATED PARTS LIST**

30-81-11

MADELEC AERO
COMPONENT MAINTENANCE MANUAL
PART N°: MS 741-000

LIST OF EFFECTIVE PAGES

| SUBJECT | Page | Date | SUBJECT | Page | Date |
|------------------------|------|---------|---------|------|------|
| List of Effective Page | 1 | 4.2.97 | | | |
| Record of Revision | 1 | 4.2.97 | | | |
| Table of Contents | 1 | 10.5.95 | | | |
| General | 1 | 10.5.95 | | | |
| Figure | 1001 | 10.5.95 | | | |
| Nomenclature | 1002 | 4.2.97 | | | |

MADELEC AERO
COMPONENT MAINTENANCE MANUAL
MS741-000

RECORD OF REVISIONS

| REVISION | | INSERTION | | REVISION | | INSERTION | |
|----------|------------|-----------|----|----------|------|-----------|----|
| N° | Date | Date | By | N° | Date | Date | By |
| 1 | May 10, 95 | | | | | | |
| 2 | Feb. 4, 97 | | | | | | |

MADELEC AERO
COMPONENT MAINTENANCE MANUAL
MS741-000

TABLE OF CONTENTS

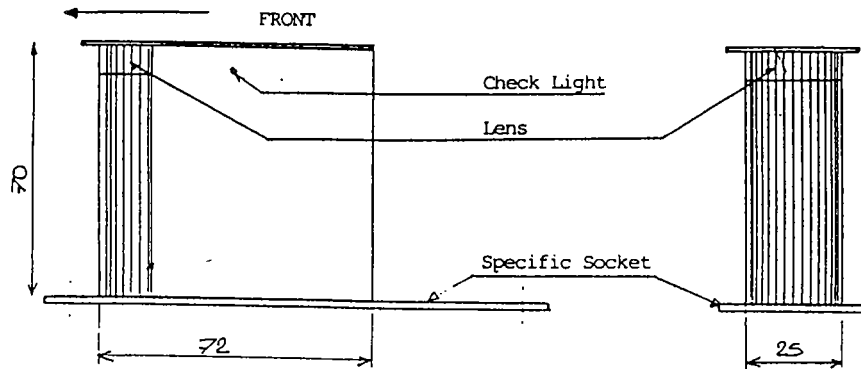
| SUBJECT | Chapter Section Subject | Page | Effectivity |
|-------------------------------------|-------------------------------|------|-------------|
| COMPONENT MAINTENANCE MANUAL | | | |
| Description & Operation | General | 1 | |
| Fault Isolation | General | 1 | |
| Adjustment/Test | General | 1 | |
| Removal / Installation | General | 1 | |
| ILLUSTRATED PARTS CATALOG | | | |
| Figure 1 | Figure | 1001 | |
| Nomenclature | Nomenclature | 1002 | |

MADELEC AERO

MS741-000/Component Maintenance Manual

1. DESCRIPTION & OPERATION

This Icing Indicator detects early icing and remains the last ice accumulation point of the aircraft. The light source enables ice detection during nights flights.

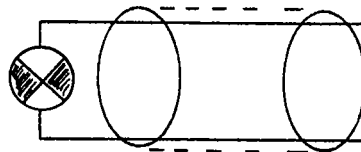


The indicator is installed at the base of the windshield to be easily monitored by the crew.

The lens is illuminated by an internal bi-pin. Ice accumulation masks this source. A light check point enables light source status monitoring.

2. FAULT ISOLATION

Wiring Diagram:



3. ADJUSTMENT / TEST

Aimlessly

4. REMOVAL / INSTALLATION

Light source is easily accessible for quick replacement on condition.

To exchange the light source:

- unscrew the both top screw Rep. 100;
- pull out the lamp holder Rep. 60;
- exchange the bi-pin Rep. 50.

Be careful:

- exchange the both screws Rep. 100 after every unscrewing.

MADELEC AERO
MS741-000 / ILLUSTRATED PARTS CATALOG

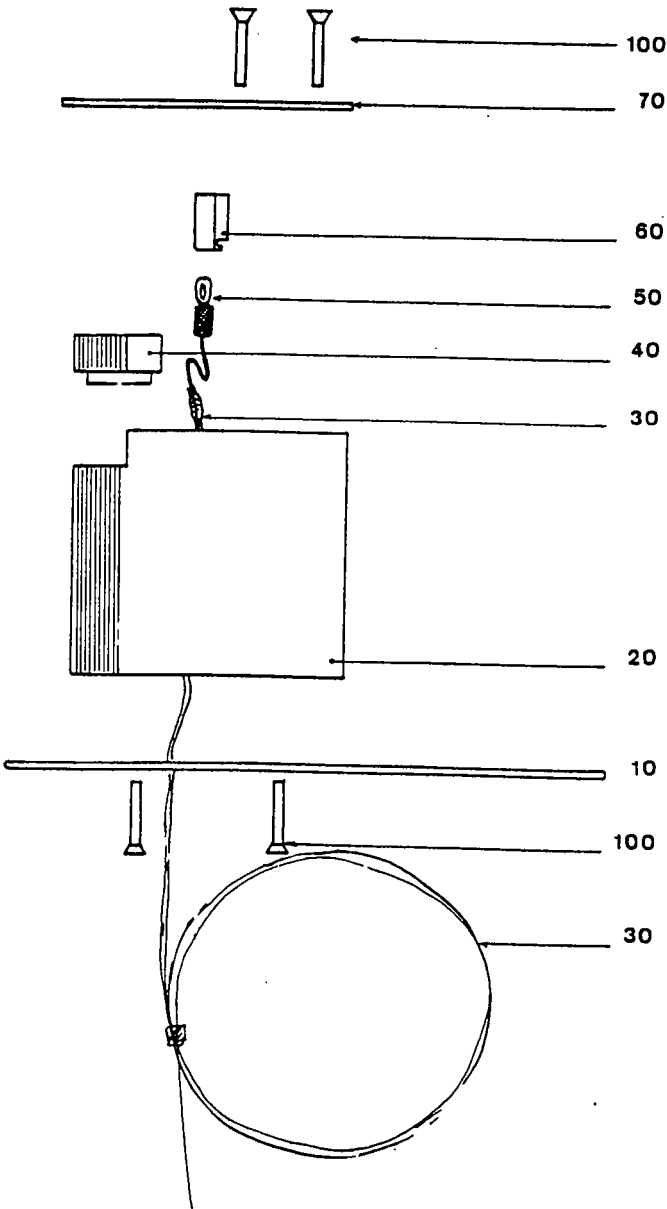


FIGURE N° 1

MADELEC AERO
MS741-000 / ILLUSTRATED PARTS CATALOG

| Fig. Item | Part Number | AIRLINE Stock N° | Nomenclature | Usage | Units/Assy |
|-----------|-------------|---------------------|--------------------------------------|-------|------------|
| -001A | MS741-000 | | Lighted Icing Indicator | | RF |
| 010A | 741-101 | | .Socket | | 1 |
| 020A | 741-102 | | .Main Part | | 1 |
| 030A | 741-106 | | .Cable | | 1 |
| 040A | 741-104 | | .Diffuser | | 1 |
| 050A | 741-311 | | .Lamp Bi-pin 28 VDC / 0,024 A | | 1 |
| 060A | 741-105 | | .Lamp Holder | | 1 |
| 070A | 741-103 | | .Fence | | 1 |
| 100A | 741-302/A | | .Screw M3x10/90° (Inox-Chrome Black) | | 1 |

- item not illustrated